

connecting
different worlds

Installation Manual

OCA
OneSpace Connect AutoCAD

Contents

1. Preface	3
1.1. How to use this manual.....	3
1.2. © 2008 ASCAD GmbH.....	3
2. Installation Requirements	4
2.1. Version Requirements	4
2.2. Operating Systems	4
2.3. Needed Licences	4
2.4. Other	4
2.5. Installation packet	5
2.6. Hints	5
3. Installation of Product	6
3.1. Preparation	6
3.2. Executing Installation (<i>Setup.exe</i>).....	6
3.2.1 Installation without dialog.....	6
3.2.2 Interactive Installation (with dialog).....	7
3.2.3 Network Installation.....	8
3.3. Checking Result.....	9
3.3.1 Autocad	9
3.3.2 Registry Entries.....	9
3.3.3 OneSpace Manager.....	9
4. Customizing Standard Application.....	10
4.1. Prototyp	10
4.2. Example Frames.....	10
5. Possible Problems	11
5.1. "catalog oca.cat not accessible"	11
5.2. "register class: unkown document-class ... "	11
5.3. "OCA Requestserver writes wrong HPGL-Files"	11
Appendix.....	12
A Example <i>setup.cfg</i> („silent install“)	12
B Log File.....	14

Preface

This document describes the installation process of OneSpace Connect AutoCAD. Preparatory steps professed and coherences are explained between the single called files. Documentation was written for system administrators with sufficient experience in Co|Create and AutoCAD environment.

Installation presupposes a correct running OneSpace Manager database and installed clients both Co|Create and AutoCAD. During installation standard directories and schema will be extended.

1.1. How to use this manual

<i>Courier</i>	Texts written in <i>courier</i> indicate system outputs, configuration or source code.
Courier bold	Bold printed text indicates required input of user
<i>Italic</i>	<i>Italic</i> text means filenames

1.2. © 2008 ASCAD GmbH

Contents and structure of this document are copyrighted materials. The duplication of information or data, in particular the use of texts, parts of texts or graphical material requires the previous agreement of the ASCAD GmbH.

Most software and hardware names which mentioned in this document are registered trademarks and they refer to the legal determinations as such.

Installation Requirements

1.3. Version Requirements

OneSpace Connect AutoCAD requires an implementation of AutoCAD and a database instance of OneSpace Manager. Software was tested and released in following combinations:

	WM 11.65	WM 12.01C (OSM 2004)	WM 13.20B (OSM 2005)	WM 14.00B/ 14.50 (OSM 2006)	WM 15.00 ¹⁾ (OSM 2007)	WM 15.xx ¹⁾ (OSM 2007)
AutoCAD (Mech.)2004	OCA 2004 (Rev. 2.0.2)					
AutoCAD (Mech.) 2005		OCA 2005 (Rev. 3.0.x)	OCA 2005 (Rev. 3.0.x)			
AutoCAD (Mech.) 2006			OCA 2006 (Rev. 3.1.x)	OCA 2006 (Rev. 3.1.x)		
AutoCAD (Mech.) 2007			OCA 2007 (Rev. 4.0.x)	OCA 2007 (Rev. 4.0.x)	OCA 2007 (Rev. 4.1.x)	
AutoCAD (Mech.) 2008						OCA 2008 (Rev.5.0.x)

1) OSD Manager 2007 with ISO-schema - german / engl. localisation

It is possible to install product in other combinations as mentioned. But only for listed versions a full functionality can be guaranteed.

1.4. Operating Systems

Installation and using OneSpace Connect AutoCAD requires one of the following operating systems:

- WINDOWS 2000 (SP4)
- WINDOWS XP Professional (SP2)

1.5. Needed Licences

Product needs two licenses provided by Co|Create license manager "MEIs". There is one line respectively for AutoCAD and OneSpace Manager Component.

1.6. Other

For smooth installation following boundary conditions must be made:

- Writing permissions to AutoCad installation directory
- Enable OneSpace Manager client to start with administrative rights for extending schema

- Writing permissions to startup files of OneSpace Manager Client
- Clients of AutoCAD and OneSpace Manager in correct language support
- Space requirement on hard disc approximate 15 MB; 5 MB of this in AutoCad directory and 1 MB in OneSpace Manager directory
- Running OCA Manager requires 6 MB of RAM

1.7. Installation packet

Installation packet contains setup routine *setup.exe* and the configuration file *setup.cfg* for installation and establishing base application files for AutoCad and OneSpace Manager.

1.8. Hints

During installation process a client which is free of manipulations is assumed. This is not given in test environments for example. Following System Variable is evaluated:

```
e.g.: WMDT_DIR=d:\opt\cocreate\modelmgr_2008\desktop
```

For further installation notes and customization read online help (*OCAman.hlp* – Microsoft help format) in setup package.

Installation of Product

Installation packet contains setup routine *setup.exe* and the configuration file *setup.cfg* for installation and establishing base application files for AutoCad and OneSpace Manager.

The Installation is executed in the following steps:

- Preparing the installation
- Installation of the product
- Checking standard installation
- Customizing

1.9. Preparation

First of all installation packet must be unpacked into a local or a network directory (e.g. *setuppack.zip\setuppack* → *D:\opt\CoCreate\Oca*). Before you can start following settings must be made in the enclosed configuration file (*setup.cfg*)

- Language for install dialog and OCA
`SETUP_LANG = english`
- Interaktiv- or silent option
- Network or local option
- Installation directory
- Default headerfile for OCA-Manager configuration
- Extension of schema

- Dependently of the selected language, copy the file *ocaman_en.hlp* and/or *ocaman_de.hlp* to *ocaman.hlp*.

Because of changes in schema it is recommended to backup actual OneSpace Manager Database.

1.10. Executing Installation (*Setup.exe*)

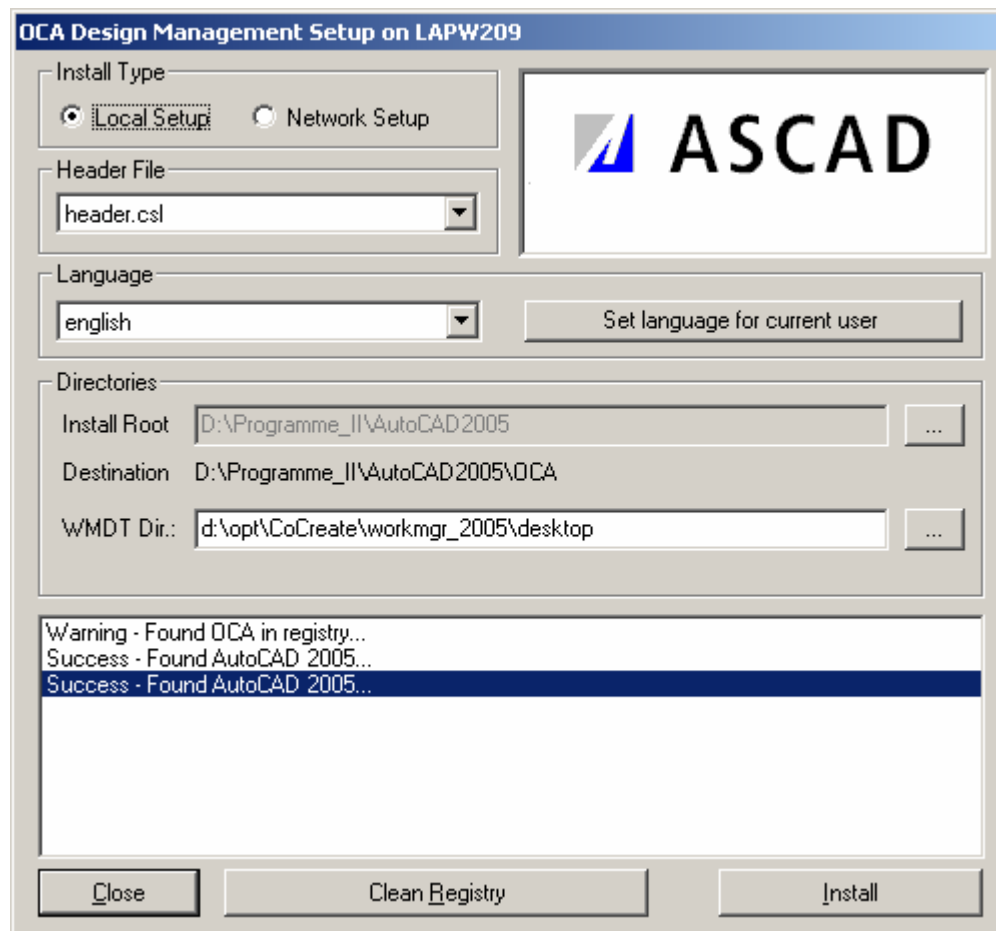
1.10.1 Installation without dialog

If silent option was chosen in *setup.cfg* during setting to `1` no installation dialog will appear. Installation runs fully automatically. If you combine this option with network option you have an effective setting to install a large number of clients. After installation process you can find log files for every client in directory *<setuppack>\logs* named *<client>.log*. (See Appendix B)

This method only should be used for normal clients but not for initial installation because extensions of schema will be made.

1.10.2 Interactive Installation (with dialog)

Without silent option in *setup.cfg* a dialog box is opened during installation



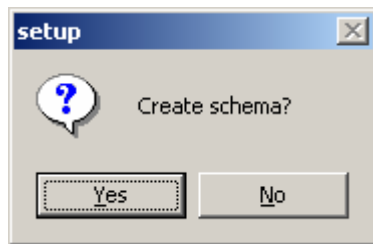
Program is searching for AutoCAD installation directory and available OCA software. All executed actions are displayed in protocol window. Simultaneous a protocol file *<rechnername>.log* is written to directory *<setuppack>\logs*.


If there is any version of OCA on system it is recommended to push „Clean Registry“ to delete old OCA entries.



If Model Manager was installed *WMDT_DIR* was set to **Model Manager** directory automatically. You must edit *WMDT_DIR* to **OneSpace Manager** desktop directory manually.

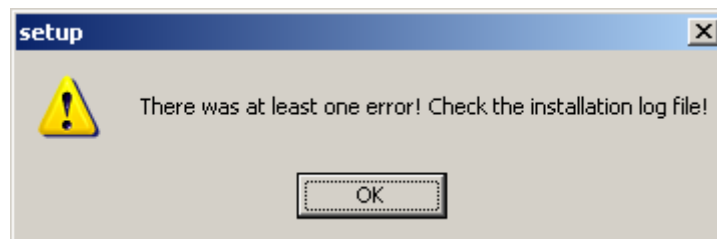
With „Install“-action process of installation will be started. Before program can extend schema a dialog box appears:



 Schema for OneSpace Manager must be extended only once! For every further installation default setting of `CREATE_SCHEMA` should be Zero (0).

Before you commit answer with „Yes“ an OneSpace Manager-Client with login as a sysadmin (e.g.: `medmgr`) must be started. This client does all changes in database and finally closes itself.

If there was any error during installation process a dialog box will appear with following answer:



Otherwise protocol is closed with reporting::

„ Success - Installation finished... “

 Please check `.Vogs\<clientname>.log` in install directory in any case.

1.10.3 Network Installation

For network installation it is expected that installation directory is present for client at any time and on the same location like during install process.

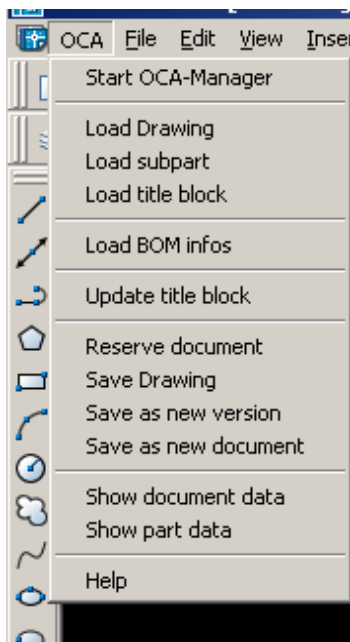
e.g: `setuppack.zip\setuppack` → `N:\CoCreate\OCA`

... means: AutoCad and OneSpace Manager clients will load files from this directory during startup.

1.11. Checking Result

1.11.1 Autocad

In AutoCad program directory a new directory „OCA“ was created. There are stored some files for running and starting application. Reloading of OCA during startup process in AutoCad is pushed thru **acad.rx** file in AutoCad directory. In this file you find an entry **<ACAD-DIR>\OCA\locaarx.arx**.



After AutoCad startup a new menu “OCA” is displayed. Language of menu commands depend on settings during installation

1.11.2 Registry Entries

Setup program writes following registry entries depending on install settings:

```
[HKEY_LOCAL_MACHINE\SOFTWARE\AS_APPLIC\OCA]
    "installpath"="D:\Programme_II\AutoCAD2008\OCA"
    "headerfile"="D:\Programme_II\AutoCAD2008\OCA\header.csl"
    "Lang"="german"
```

```
[HKEY_CURRENT_USER\Software\AS_APPLIC\OCA]
    "Lang"="german"
```

1.11.3 OneSpace Manager

Standard OneSpace Manager

Setup program changes following file to enable loading OCA features for standard OneSpace Manager client:

```
<WM-Client-Dir>\desktop\startup\ui_cust.m:
    LET Aes_oca_xdir (Wmdt_dir + '/custom/oca')
    INPUT (Aes_oca_xdir + '/startup/startup.m')
```

File will be appended on client every time you start setup. All OCA-files are stored in *custom*-directory of *<wmdt_dir>*.

Customizing Standard Application

1.12. Prototyp

Presettings for AutoCad documents are stored in file:

```
.\custom\oca\files\proto.dwg
```

Normally there are stored typical base settings for the default layout.



AutoCad sysadmin should define these settings for desired environment and care for *proto.dwg* in this central directory.

1.13. Example Frames

There are example frames which are stored in database automatically during setup process.

Enclosed frames contain attributes which references German schema. A reference mapping between used names in frames and in database is defined in

```
.\custom\oca\files\attr_map.csl
```

So you can use an English schema as well. All mapping are defined in standard *attr_map.csl*.

To the data base communication decisive is `tag` attribute. Prefixes `D_`, `P_` `CNx_` are used to refer document-, part- and changenote attributes.

For a titleblock update process in any titleblocks (custom-frames) their names can be defined in:

```
.\custom\oca\files\tb_names.csl
```

All listed blocks are searched.

For more detailed information please read online help.

Possible Problems

1.14. “catalog oca.cat not accessible”

... during startup of OneSpace Managers after installation

Cause: WorkMgr_Path is other than part of WMDT_DIR

```
e.g.: set WorkMgr_Path=d:\opt\CoCreate\modelmgr_2008
      set WMDT_DIR=d:\opt\CoCreate\modelmgr_2008\desktop
```

Correction: remove `D:\opt\CoCreate\modelmgr_2008\desktop\custom\oca.`
 edit `D:\opt\CoCreate\modelmgr_2008\desktop\startup\ui_cust.m`

1.15. “register class: unkown document-class ... ”

... during startup of OneSpace Managers after installation

```
„REGISTER CLASS: Invalid document class FRAME_ACAD“
„REGISTER CLASS: Invalid ChangeNote class CHANGENOTE_ACAD“
```

Cause: WorkMgr_Path is other than part of WMDT_DIR

⇒ schema was generated in german

Correction: delete „wrong“ classes in Schema or restorer database

```
(ACAD, RAHMEN_ACAD/FRAME_ACAD, AEND_NOTIZ_ACAD/CHANGENOTE_ACAD)
install again with schema generation on and take care to WMDT_DIR
(See 3.2.2.)
```

5.3 “OCA Requestserver writes wrong HPGL-Files“

There are two new functions/keywords in AUTOCAD for debugging,
 during OCA Requestserver generates HPGL or Postscriptfiles: OCA_MK_HPGL
 OCA_MK_PS

Requirements:

- appropriate parameter files in the exchange directory
- existing plotters (ReSrvHPGL & ReqSrvPS)
- loaded drawing
- systemvariable AES_ADP_XDIR_XCH must be set

Appendix

A Example *setup.cfg* („silent install“)

```

;*****
;
;                               ASCAD GmbH
;                               OCA 2008 Setup Configuration
;*****

[OCA_MAIN]

SETUP_LANG                       =german
;SETUP_LANG                       =english
; Default package comes with german or english
;*****

ALLOW_DEINSTALL                 =1
; 0 - Registry cleanup is not allowed
; 1 - Registry cleanup is allowed
;*****

SILENT_INSTALL                   =1

;if 1, there will be no window and input possibility
;if 0, there will be shown an install dialog
;*****

LANG                             =german

;the name of the lang file (*.OCA)
;if file is not found is english used as default
;*****

DEFAULT_INSTALL_ROOT_DIR        =%ACAD_DIR
;DEFAULT_INSTALL_ROOT_DIR        =S:\

;for local installation only
;the default root directory of the install directory
;set to %ACAD_DIR to install in acad directory
;*****

OCA_INSTALL_DIR                  =OCA

;for local installation only
;the default destination directory
;*****

ALLOW_CHOOSE_INSTALL_ROOT      =1

;if 1: the user is allowed to change OCA_INSTALL_DIR
;*****

[OCA_SERVER_SIDED]

;*****

NETWORK_INSTALL                  =0

;if 1, no files will be copied.

```

```
; Only local registration will be done.
;   THERE MUST BE A PERMANENT MOUNTED NETWORK DEVICE
;if 0, All files will be stored locally on the client.
```

```
[OCAMAN]
```

```
*****
DEFAULT_HEADERFILE           =header.csl
;default configuration for document list in OCAMAN
;This file will be used as the default header file
;Each user can create his own file, after installation
*****
```

```
[DESIGN_MANAGEMENT]
```

```
OCA_DM_INSTALLATION         =1 ;DO NOT CHANGE
;1 - for pure DesignManagement installation
;0 - for atlas_es environments
```

```
CREATE_SCHEMA                =0
;only for first run on the server
```

```
;create document classes ACAD and ACAD_FRAMES
*****

;END OF OCA SETUP CONFIGURATION FILE
*****
```

B Log File

```

LAPW209 - Feb 12, 2008: Warning - Found OCA in registry...
LAPW209 - Feb 12, 2008: Success - Found AutoCAD 2008...
LAPW209 - Feb 12, 2008: Success - Found AutoCAD 2008...
LAPW209 - Feb 12, 2008: Warning - Create directory failed :
d:\opt\CoCreate\modelmgr_2008\desktop\custom
LAPW209 - Feb 12, 2008: Success - Copy WorkManager module to destination directory
LAPW209 - Feb 12, 2008: Success - Adding OneSpace-Connect/AutoCAD into WorkManager bootstrap
LAPW209 - Feb 12, 2008: Success - Copying national language support files
LAPW209 - Feb 12, 2008: Success - Copying bitmap files
LAPW209 - Feb 12, 2008: Success - Install directory saved to registry :
D:\Programme_II\AutoCAD2005\OCA
LAPW209 - Feb 12, 2008: Success - header.csl saved to global registry...
LAPW209 - Feb 12, 2008: Success - <english> saved to global registry...
LAPW209 - Feb 12, 2008: Warning - Create directory failed : D:\Programme_II\AutoCAD2005\OCA
LAPW209 - Feb 12, 2008: Warning - Create directory failed : \lang
LAPW209 - Feb 12, 2008: Success - Filecopy ' G:\oca\OCAman.exe' ->
'D:\Programme_II\AutoCAD2005\OCA\OCAman.exe'...
LAPW209 - Feb 12, 2008: Success - Filecopy ' D:\opt\CoCreate\Oca\OCAman.hlp' ->
'D:\Programme_II\AutoCAD2005\OCA\OCAman.hlp'...
LAPW209 - Feb 12, 2008: Warning - Create directory failed : \headers
LAPW209 - Feb 12, 2008: Success - Filecopy ' D:\opt\CoCreate\Oca\OCAarx.arx' ->
'D:\Programme_II\AutoCAD2005\OCA\OCAarx.arx'...
LAPW209 - Feb 12, 2008: Success - Filecopy ' D:\opt\CoCreate\Oca\libpdm.dll' ->
'D:\Programme_II\AutoCAD2005\OCA\libpdm.dll'...
LAPW209 - Feb 12, 2008: Success - Filecopy ' D:\opt\CoCreate\Oca\mfc70.dll' ->
'D:\Programme_II\AutoCAD2005\OCA\mfc70.dll'...
LAPW209 - Feb 12, 2008: Success - Filecopy ' D:\opt\CoCreate\Oca\msvc70.dll' ->
'D:\Programme_II\AutoCAD2005\OCA\msvc70.dll'...
LAPW209 - Feb 12, 2008: Success - Filecopy ' D:\opt\CoCreate\Oca\msvcr70.dll' ->
'D:\Programme_II\AutoCAD2005\OCA\msvcr70.dll'...
LAPW209 - Feb 12, 2008: Warning - Will overwrite old <ocaarx.arx> entry in
D:\Programme_II\AutoCAD2005\acad.rx!
LAPW209 - Feb 12, 2008: Success - ocaarx.arx added to D:\Programme_II\AutoCAD2005\acad.rx
LAPW209 - Feb 12, 2008: Success - Register ocaman.exe...
LAPW209 - Feb 12, 2008: INFO - No creation of schema
LAPW209 - Feb 12, 2008: Success - Installation finished...

```

End of installation log.